

  
infinithéâtre

# THE SIGHILENCE OF SKY

WINNER OF TWO  
MONTREAL ENGLISH  
THEATRE AWARDS!

MONTREAL GAZETTE'S  
TOP 10 SHOWS 2021!

CREATED & PERFORMED  
BY ANANA RYDVALD

## PRESS PACK

level  
Theatre

SN

CALQ  
Conseil  
des arts  
et des lettres  
du Québec

Fondation  
Azrieli  
Foundation

kin.  
EXPERIENCE

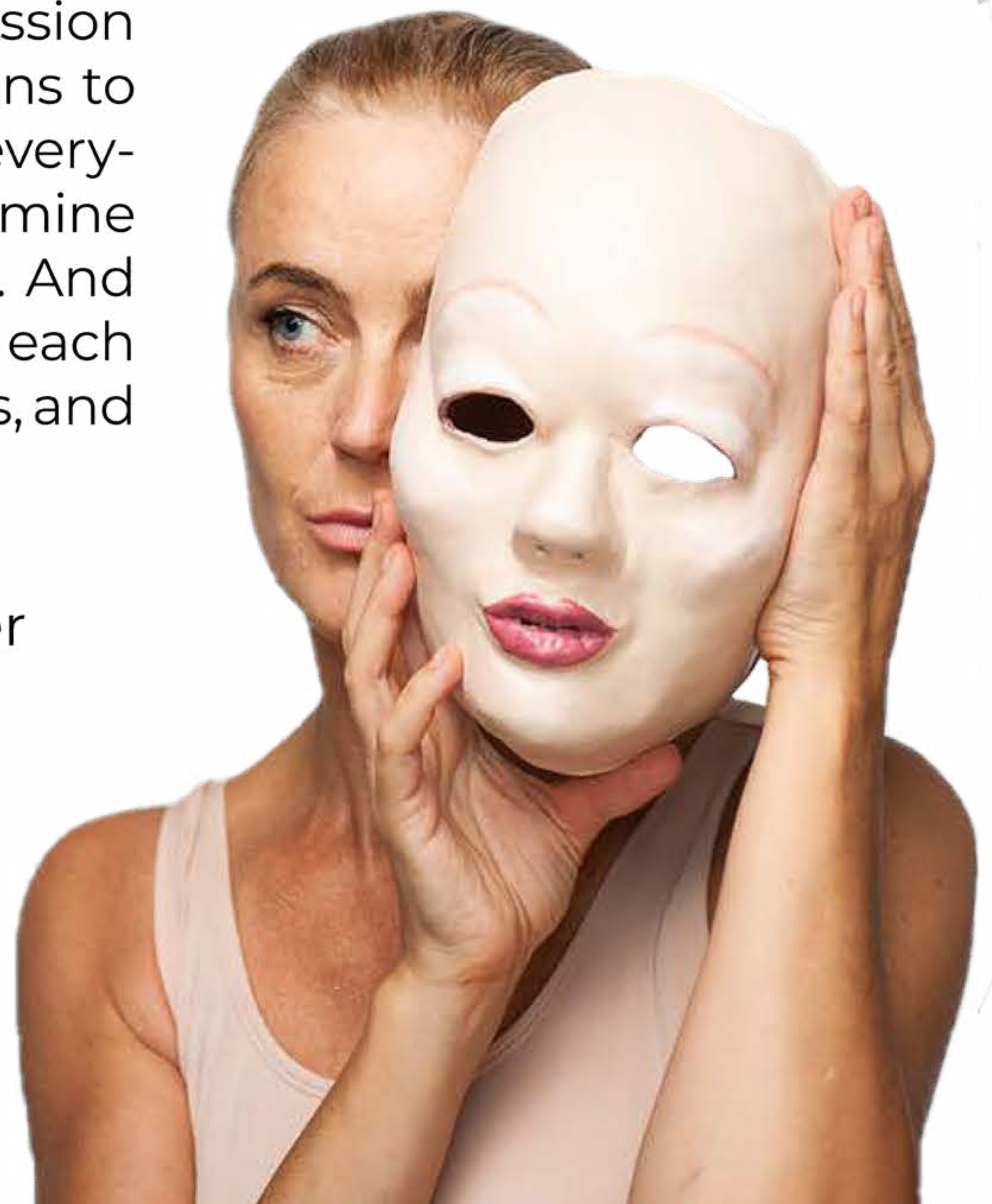




## NOTE FROM THE CREATOR

“I have created three solo shows so far. One about a girl in a mental institution, *Section O* (2005), one about a young woman on a quest to forgive her mother because she is becoming a mother herself, *Love, Child* (2015), and finally a story about a child with a disability who challenges her parents and ultimately helps them recognize their own strengths and weaknesses, *The Sighlence of Sky* (2021). The last piece is inspired by my sister who has autism and also by people that I have worked with that are on the spectrum. What feels special about this last piece is that it is all performed in mime. All of the masks are “full-faced” masks and I use only my body and some simple text that is projected on the wall. On top of this piece being very close to my heart, I also have the feeling that I’m bringing something ancient back into our present that is very much needed today. For the hour that I’m with the audience there is only a single focus; emotion and imagination. There is the environment that I carve out for the audience to see through their personal imagination, and there are the characters that express emotions solely through gestures. It’s the non-verbal universal language that we can all relate to. A language that we don’t often focus on today. So I’m absolutely thrilled to be able to celebrate this kind of art form in *The Sighlence of Sky* and to hopefully share some compassion and understanding for what it means to raise a child with a disability. It’s not everyone’s story, but at least it’s a part of mine that I hope some will find relatable. And that’s what it’s all about, relating to each other through art. Art heals, connects, and inspires crucial conversations.”

**Anana Rydvald**, Creator/Performer







## SYNOPSIS

A non-verbal mask and mime piece, *The Sighlence of Sky* is a tender ode to the heart-ache and the love that live within family bonds, as a family navigates disability and neurodivergence. From creator Anana Rydvald: “*The Sighlence of Sky* is inspired by my resilient sister who is the innocent constant in our lives in which we reflect back our humanity again and again.” Rydvald last charmed Infinithéâtre audiences with her solo show, *Love, Child*.

*The Sighlence of Sky* originally ran from November 25th until December 5th, 2021 at Kin Experience in Montreal, as part of Infinithéâtre’s 2021/22 season.



[CLICK HERE TO WATCH THE TRAILER](#)

*“Rydvald’s craft is spell-binding as she evokes a world of palpable objects and complex emotions.”*

— Jim Burke, The Gazette

CONTACT : Zach Fraser / 514-987-1774 / zach@infinitheatre.com





## ABOUT THE CREATOR



Originally from Denmark, **Anana Rydvald** first came to Montreal to study at Les Grands Ballets Canadiens at the age of 12. Since then she trained as an actress and mask artist in both Europe and Canada and eventually worked as an actress for several years with the renowned Scandinavian Theatre group Cantabile 2 that creates site-specific performances around the world. With her own company Level 4 Theatre she launched her solo performance **Section O** which won her a MECCA revelation award. Her second mask performance **Love, Child** won her a META award for best leading performance. She has taught mask work at Cirque du Soleil, as well as at an orphanage in India, and the School of Stage Arts in Denmark. She works as an actress, voice artist and mo-cap performer in Montreal, while teaching Mime and Improvisation at John Abbott College.

[www.ananarydvald.com](http://www.ananarydvald.com)

*“Transformative, beautiful, haunting, essential and a must see. Anana Rydvald moves like silk, effortlessly embodying three different characters.”*

— Audience member

CONTACT : Zach Fraser / 514-987-1774 / zach@infiniteatre.com





# CREATIVE TEAM

## Created and Performed by

Anana Rydvald

## Directed by

Zach Fraser

## Set and Costume Design

Cathia Pagotto

## Sound Design

Troy Slocum

## Video Design

Mateo Mazzini

## Lighting Design/ Production Manager

David Perreault Ninacs

## Production Consultant

Shayne Lovsin-Couture

## Mask Creation

Anana Rydvald

## Stage Manager

Bruce Lambie

## Technical Director

Tristynn Duheme

## Assistant Technical Director

Leticia Chicoine

## Videographers

Jeremiah Hayes &

Martin Duckworth



**Zach Fraser** is a Montreal-based director, producer, actor, puppeteer, puppetmaker, teacher, and the newly appointed artistic director of Infinithéâtre. Directing credits include *King of Canada* (Infinithéâtre), *Indra's Web* (NTS) and *Fifteen Dogs* (John Abbott College). *The Water Chronicles*, which he directed for Geordie Theatre, won the 2020 META for Outstanding PACT Production. His award-winning *Louis Riel: A Comic-Strip Stage Play* (RustWerk ReFinery) based on Chester Brown's graphic novel continues to tour occasionally across the country. Puppet designs include *Stars: Together* (Crow's Theatre), *B-612* (La Roulotte), *MacBeth - Walking Shadows* (Shakespeare in the Ruff), *The Nisei & the Narnauks* (Persephone Productions), *The Aeneid* (Talisman Theatre) and *The Heretics of Bohemia* (Scapegoat Carnivale / Segal Centre). Zach teaches in the Theatre Department at John Abbott College, in the specialized puppetry program at UQÀM, and at the National Theatre School of Canada.





# REVIEW EXCERPT

## REVIEW EXCERPT FROM MONTREAL GAZETTE'S JIM BURKE

### MONTREAL GAZETTE

Montreal Theatre / Entertainment

## "Quietly sublime"

Jim Burke • Special to Montreal Gazette  
Dec 03, 2021 • December 7, 2021 • 3 minute read •

The Sighlence of Sky, which Infinithéâtre is presenting at the KIN Experience gallery to Dec. 5., is a mesmerizing non-verbal mask and mime piece. Created and performed by Anana Rydvald, it focuses on the troubled life of her sister.

Rydvald's craft is spellbinding as she evokes a world of palpable objects and complex emotions. The masks, which she herself made, express various personalities that magically transform her body shape.

There are several heart-in-the-mouth moments as the sister eludes her parents' care and goes exploring a dangerous world. The final image, a blend of light, video and graceful physicality is both gorgeous in its visual poetry and heartbreaking in its implications. The show lasts around 55 minutes and is highly recommended.

### AT A GLANCE

The Sighlence of Sky plays to Dec. 5 at KIN Experience, 397A Ste-Catherine St. W. Tickets: \$30, students & seniors: \$25. Call 514-987-1774 or visit [infinitheatre.com](http://infinitheatre.com)





# META WINS

Won 2 METAs, Nominated for 4  
(Montreal English Theatre Awards) 2021/2022



Photographed from Left to Right: Kun Chang, Bruce J Lambie, Shayne Lovsin, Anana Rydvald, Zach Fraser, David Perreault Ninacs. Photo by Ashe Lang

**OUTSTANDING LEAD (WINNER)**  
**PERFORMANCE - Independent Production**  
Anana Rydvald

**OUTSTANDING DIRECTION**  
Zach Fraser

**OUTSTANDING INDIE PRODUCTION (WINNER)**  
Level 4 Theatre

**OUTSTANDING NEW TEXT**  
Anana Rydvald



CONTACT : Zach Fraser / 514-987-1774 / zach@infiniteatre.com





# THEATRE IN THE CLASSROOM

**Action Infini** is aimed at integrating theatre into school curriculums, and introducing students to great new Canadian plays, all while making theatre accessible, affordable and engaging. We provide access to our productions, comprehensive study guides, and talkback opportunities with the artistic team to participating teachers and students. With the option of digital access or class field trips, bring your school to the new, cutting-edge theatre of Montréal!



**Version française disponible pour votre école!**

The Sighlence of Sky is in the process of being translated by **Maryse Warda!**



Née en Égypte où elle passe son enfance, **Maryse** arrive à Montréal à l'âge de 9 ½ ans où elle apprend l'anglais en regardant *Happy Days*. En 1991, le directeur du Quat'Sous, Pierre Bernard lui offre la chance d'effectuer sa première traduction, **Traces d'étoiles**, de Cindy Lou Johnson. La pièce est couronnée d'un tel succès qu'elle marque le début d'une carrière aussi inespérée qu'inattendue. Depuis, elle a effectué plus de 70 traductions d'auteurs nord-américains, britanniques, écossais et irlandais. Son travail sur la série **Motel de passage**, de George F. Walker, reçoit en 2000 le Masquede la traduction et est en lice pour un prix du Gouverneur Général, mais c'est sa traduction de **Toxique ou L'incident dans l'autobus**, de Greg MacArthur, qui lui vaut cet honneur en 2011. Récemment, en 2021 et 2022, on a pu voir ses traductions et/ou adaptations de **Vania & Sonia & Macha & Spike**, au Rideau vert.

For more information about the Action Infini 2021-2022 program or to participate in future programming, please contact our education and outreach coordinator at [manager@infinitheatre.com](mailto:manager@infinitheatre.com) or give us a call at 514-987-1774!

CONTACT : Zach Fraser / 514-987-1774 / [zach@infinitheatre.com](mailto:zach@infinitheatre.com)





# FUNDERS/SUPPORTERS

## MAJOR FUNDERS



Conseil  
des arts  
et des lettres  
du Québec



*Secrétariat aux relations  
avec les Québécois  
d'expression anglaise*



## SEASON SUPPORTERS



Eric T. Webster  
Foundation



**elan**  
english language  
arts network

